



FOR EDUCATION

Take your coaching to the next level.



POWERED BY



S O G I L I T Y



WORLD-CLASS TRAINING EXPERIENCE.

High schools and colleges can use ESA kit to enhance their facilities, and offer their students a world-class training experience.

Our data-led platform facilitates detailed academic studies, while younger students can be introduced to data-driven sports science in a fun and engaging way.



FTY LAB MEN'S ICON 6M MAESTRO LEADERBOARD

FILTER BY: NATIONALITY POSITION PREFERRED FOOT

RANK		NAME	SCORE	MISSES
1		JACK WILSHERE	129	0
2		ADAM LALLANA	126	0
3		JUSTIN CHAMBERLAIN	119	0
4		EDDIE MITCHELL	113	3
5		SAM FREEMAN	108	2
6		WES FOGDEN	107	0
7		RYAN WARRENER	105	1
8		SAM ROOTS	100	9
9		TOM MITCHELL	99	0
10		ZAK CHERRETT	99	1

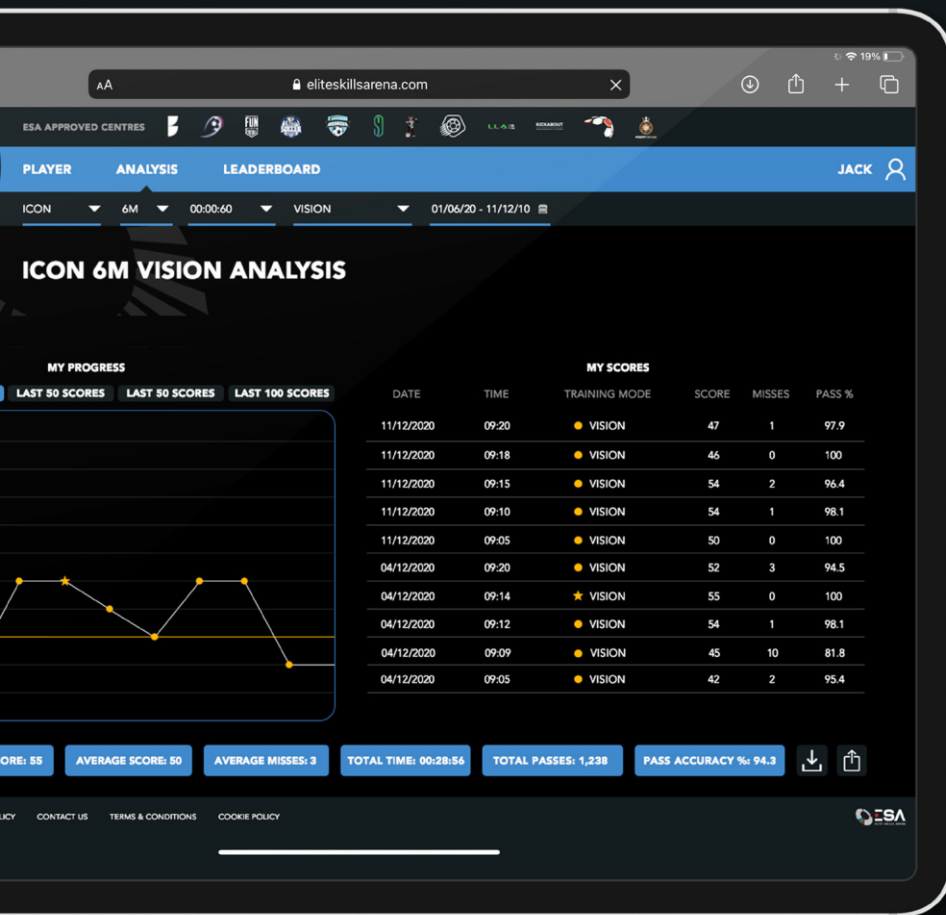
ELITE SKILLS ARENA 2020 PRIVACY POLICY CONTACT US TERMS & CONDITIONS COOKIE POLICY

RAISE YOUR GAME.

ESA kit is trusted by elite clubs all over the world to deliver data-led performance insights.

We give educators the opportunity to set themselves apart by offering their students world class equipment, and the same training methods used by professional clubs to build skills, enhance tactical awareness, and facilitate recovery from injury.





ESA training programmes help coaches to isolate the attributes young players need to develop, and improve them through deliberate practice.

With ESA, coaches can access a huge range of professionally designed training modes, all backed by advanced analytics so players can be benchmarked, and improvements are tracked over time.



ESA training programmes are built to simulate real match scenarios. For example:

- The ICON fine tunes the close control needed for tight areas of the pitch.
- The Precision Wall can be used to enhance shooting accuracy under pressure.
- The Wireless Circuit allows coaches virtually unlimited flexibility for setting drills based around tactical scenarios.

And much more. Whatever coaches want to focus on, ESA kit collects relevant data, and tracks improvements over time.



ICON 3.0.

Our flagship product, the ICON 3.0 is used by elite soccer clubs all over the world to fine tune skills, boost player engagement, and aid rehabilitation.

4M - 8M standard sizes with custom options, 9 professionally designed training programmes & detailed performance data from vibration sensors.



- 4M - 8M standard sizes with custom options
- 9 professionally designed training programmes Detailed
- performance data from vibration sensors ICONs are built
- with durable aluminium panels, and come in 6 standard matt or gloss colour options. We also do custom branding and sizing on request, (including the 12M monster we built for Barcelona!).

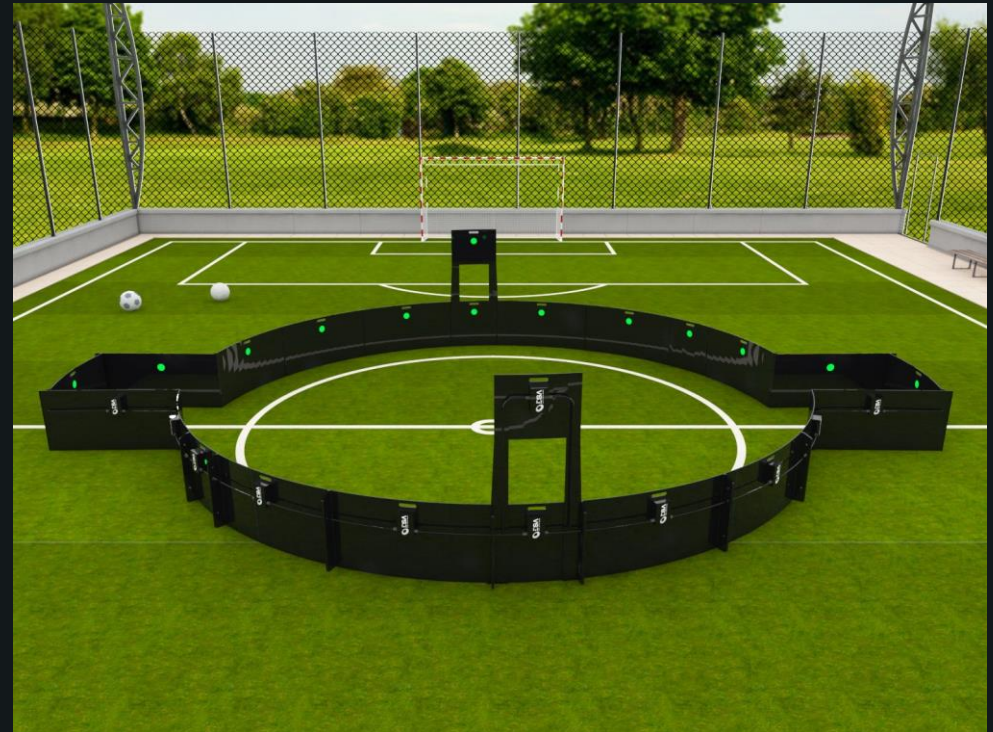


ICON V2.

Developed in partnership with elite clubs, the V2 adds another dimension to ICON training.



- Detailed data from vibration sensors & beam breaker technology to enhance dribbling
- 7 ICON training programmes & 2 V2 specific programmes
- 6M - 8M standard sizes with custom options
- Press Panels to penalise in accuracy, and simulate a switch to defensive mentality
- Pro Panels half the size to increase difficulty and demand a more accurate pass
- Range Panels with beam breakers to simulate longer passes, and movement off the ball



WIRELESS CIRCUIT.

Our Wireless Circuit allows coaches to create training drills around a diverse range of tactical scenarios. Modular and completely wireless, coaches can make use of the preset drills, or create their own using any combination of modules. The possibilities are endless!

However you choose to set up the Wireless Circuit, realtime feedback is available via the data platform, giving coaches the insight they need to enhance training and boost performance.



- 9 professionally designed training modes
- Performance data at your fingertips



WHAT OUR CUSTOMERS SAY.



“The Circuit is an amazing system. When a ball comes my way it helps me look in every direction, scan the field, react quickly, and eventually also score with the gate module. I think it will help me improve exponentially.”

Liel ABADA, Celtic & Israel (Player)



“Using the ICON they’re able to work on their first touch, their ability to see things over their shoulder, awareness of what’s around them, passing skills. They’re all transferable skills to training and games. It’s down to the coaches to be creative with it, and engage the players with something that’s a bit different.”

Lee O’NEILL, Ipswich Town (Academy Manager)



“The ICON’s brilliant, especially for young players working on their technique. Nowadays soccer’s becoming more demanding technically. Players can really practice their receiving techniques, which is one of the best assets to improve on... I’d definitely recommend it to anyone.”

Adam LALLANA, Brighton & Hove Albion (Player)

“Using the ICON has helped me develop when on the ball. I feel I have more time, due to learning to efficiently pass under pressure. The products have also been great for my physical endurance, allowing me to work at a high-intensity whilst doing some solo training. This is a nice change from the classic gym work we have to do.”

Tyrone MINGS, Aston Villa & England (Player)

“In a 90 minute match, the average number of touches for a player is 90-100. The boys can get that here in a minute, so it’s just great practice. It increases the intensity of training, and sharpens that competitive edge.”

Stephen PAYNE, MK Dons (Head of Coaching)

“The Circuit is an amazing system. When a ball comes my way it helps me look in every direction, scan the field, react quickly, and eventually also score with the gate module. I think it will help me improve exponentially.”

Yannick BOLASIE, Ex-Everton & DR Congo (Player)

“I think (the ICON) is a great tool for everyone, from youth players right up to pros. There’s everything there: the touches, the awareness, body position, opening your body up to receive balls, knowing where the next pass goes... It’s a great way to help improve your soccer at any level.”

Harry REDKNAPP, FA Cup Winner (Manager)

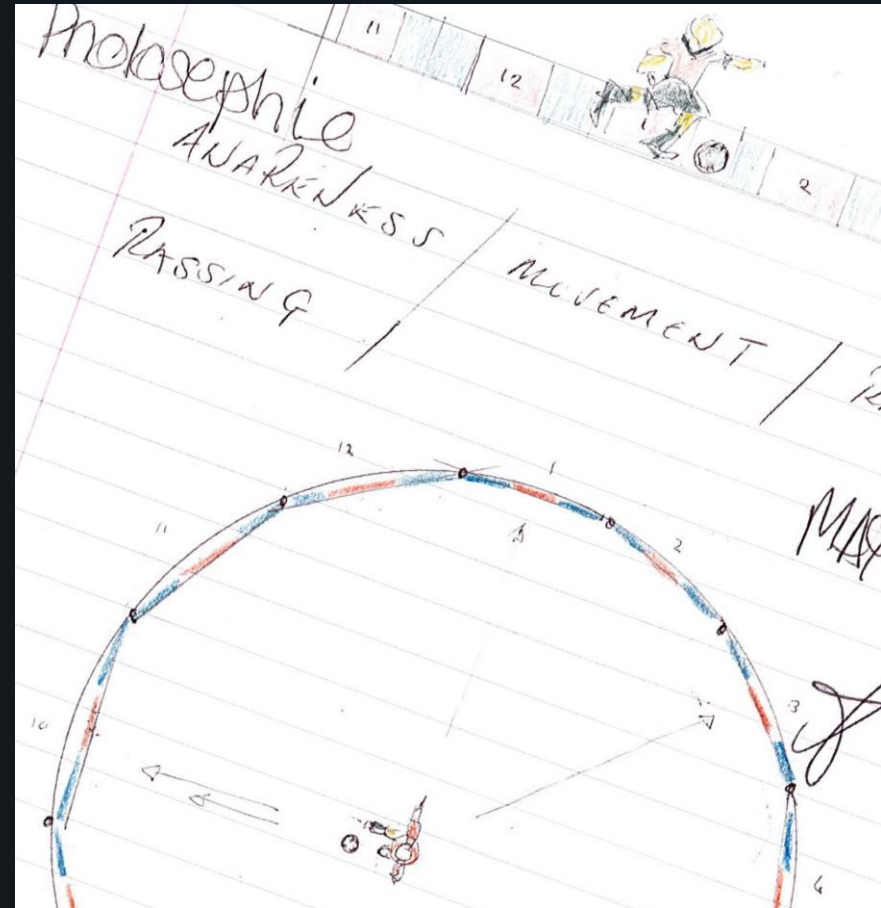


OUR JOURNEY.

Many great products begin life on a piece of paper. Our Founder, Eddie Mitchell sketched out the first ICON in 2014, shortly after selling AFC Bournemouth. Having taken the club from the bottom end of League Two through to Premier League contention, he was no stranger to the impact that great coaching can have on player development.

Eight years later, ESA supplies cutting-edge training technology to some of the world's best soccer clubs and academies. We empower coaches with data, allowing them to focus on the specific attributes required to enhance performance on the pitch.

Our product range is the result of years of research and development, in consultation with some of soccer's leading coaches.



LEARN MORE IN THE US.

info@sogility.net | www.sogility.net



POWERED BY



S O G I L I T Y

